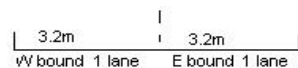
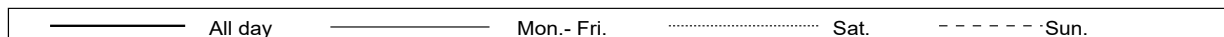
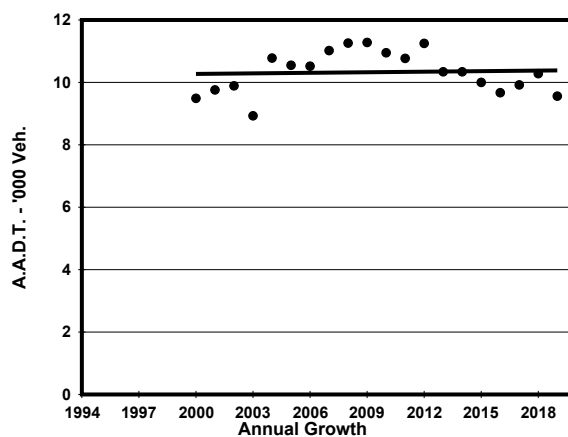
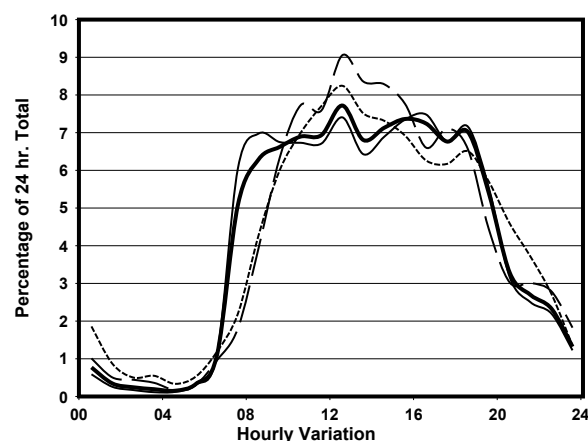
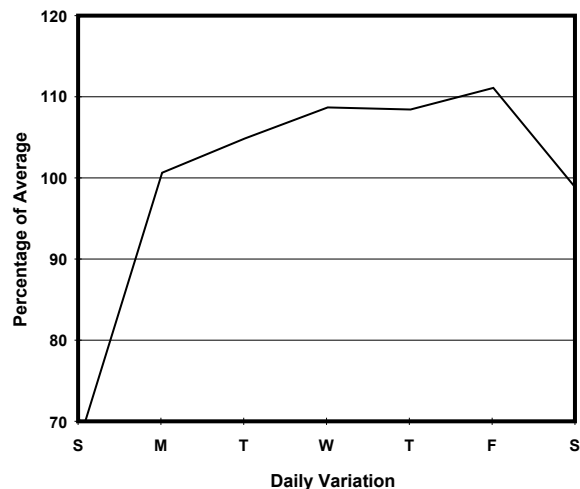
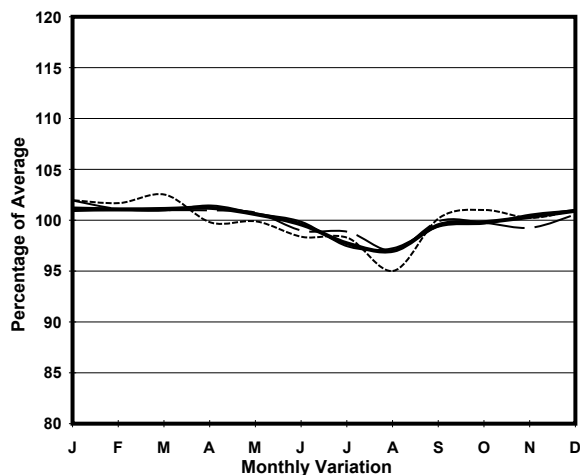


YEAR 2019  
 COVERAGE (B) STATION 2213  
 ROAD NETWORK MAJOR  
 ROAD TYPE DISTRICT DISTRIBUTOR

LINK KENNEDY RD (from MACDONNELL RD to QUEEN'S RD E)



## 1. TRAFFIC FLOW VARIATION AND GROWTH



## 2. TRAFFIC CHARACTERISTICS (BY DIRECTION)

Parameter	All - Day	Mon. - Fri.	Sat.	Sun.
<b>EAST BOUND</b>				
A.A.D.T.	6780	7350	7080	4470
R 12 / 24 - %	82.9	83.5	82.7	78
R 16 / 24 - %	96	96.5	95	93.4
AM Peak Hour	0900-1000	0800-0900	0900-1000	0900-1000
One-way flow at AM peak hour	440	520	460	290
T - % (AM)	-	1.9	-	-
PM Peak Hour	1600-1700	1600-1700	1700-1800	1800-1900
One-way flow at PM peak hour	500	570	510	300
T - % (PM)	-	2.2	-	-
Prop.of commercial vehicles - 16 hr.	-	2	-	-
<b>WEST BOUND</b>				
A.A.D.T.	2780	3030	2510	2120
R 12 / 24 - %	79.3	80.7	76.8	72.1
R 16 / 24 - %	94.4	95.1	92.8	91.6
AM Peak Hour	0900-1000	0900-1000	0900-1000	0900-1000
One-way flow at AM peak hour	190	220	150	110
T - % (AM)	-	1.6	-	-
PM Peak Hour	1600-1700	1800-1900	1600-1700	1600-1700
One-way flow at PM peak hour	190	210	180	150
T - % (PM)	-	2.1	-	-
Prop.of commercial vehicles - 16 hr.	-	2.6	-	-

## 3. OTHER INFORMATION AND COMMENT

**4. Vehicle classification and occupancy - Monday to Friday**

Time		Class of vehicle									
		Motor Cycle	Private Car	Taxi	Private LB	PLB	Goods veh.		Non Fr. Bus	Fr. Bus	
							Light	M & H		SD	DD
0700-0800	Pro	1.7	34.8	25.2	16.5	1.7	9.6	0.0	10.4	0.0	0.0
	Ocp	1.5	1.6	2.2	6.5	7.5	1.5	0.0	12.3	0.0	0.0
0800-0900	Pro	1.3	66.3	19.4	7.5	0.6	2.5	0.0	2.5	0.0	0.0
	Ocp	1.5	1.4	2.1	5.1	5.0	2.5	0.0	12.8	0.0	0.0
0900-1000	Pro	1.6	62.2	25.4	0.5	1.6	7.8	0.0	1.0	0.0	0.0
	Ocp	1.0	1.4	2.1	5.0	6.0	1.7	0.0	3.0	0.0	0.0
1000-1100	Pro	1.4	53.9	25.5	0.0	1.4	17.0	0.7	0.0	0.0	0.0
	Ocp	1.0	1.4	1.6	0.0	16.5	1.7	1.0	0.0	0.0	0.0
1100-1200	Pro	1.9	41.3	30.6	5.6	1.9	15.0	2.5	1.3	0.0	0.0
	Ocp	1.0	1.5	1.9	3.7	10.0	1.6	1.5	15.0	0.0	0.0
1200-1300	Pro	3.4	55.9	24.0	3.9	1.1	10.1	0.0	1.7	0.0	0.0
	Ocp	1.0	1.5	2.1	3.0	11.0	1.4	0.0	7.7	0.0	0.0
1300-1400	Pro	1.9	54.2	30.3	0.6	1.3	9.7	1.3	0.6	0.0	0.0
	Ocp	1.0	1.5	1.7	6.0	6.0	1.3	1.0	2.0	0.0	0.0
1400-1500	Pro	1.4	49.0	28.7	2.1	0.7	16.1	1.4	0.7	0.0	0.0
	Ocp	1.0	1.6	1.7	5.7	14.0	1.5	1.0	4.0	0.0	0.0
1500-1600	Pro	3.3	53.6	19.6	5.9	0.0	13.1	2.0	2.6	0.0	0.0
	Ocp	1.0	1.4	2.6	4.7	0.0	1.6	1.0	11.0	0.0	0.0
1600-1700 Peak hour	Pro	2.8	62.8	19.4	3.9	1.1	7.2	0.0	2.8	0.0	0.0
	Ocp	1.0	1.7	2.3	3.1	12.0	1.5	0.0	5.6	0.0	0.0
1700-1800	Pro	3.9	60.8	24.2	2.0	0.7	8.5	0.0	0.0	0.0	0.0
	Ocp	1.2	1.5	1.8	5.0	6.0	1.9	0.0	0.0	0.0	0.0
1800-1900	Pro	3.9	58.2	30.7	0.7	0.7	5.2	0.0	0.7	0.0	0.0
	Ocp	1.0	1.5	2.0	1.0	11.0	1.5	0.0	1.0	0.0	0.0
1900-2000	Pro	0.6	67.9	26.9	0.0	1.9	1.9	0.0	0.6	0.0	0.0
	Ocp	1.0	1.5	1.9	0.0	11.3	1.7	0.0	1.0	0.0	0.0
2000-2100	Pro	1.4	60.6	38.0	0.0	0.0	0.0	0.0	0.0	0.0	0.0
	Ocp	1.0	1.5	2.1	0.0	0.0	0.0	0.0	0.0	0.0	0.0
2100-2200	Pro	3.6	58.2	34.5	0.0	3.6	0.0	0.0	0.0	0.0	0.0
	Ocp	1.5	1.6	2.0	0.0	5.5	0.0	0.0	0.0	0.0	0.0
2200-2300	Pro	8.2	47.9	35.6	0.0	2.7	5.5	0.0	0.0	0.0	0.0
	Ocp	1.3	1.8	1.7	0.0	4.0	2.3	0.0	0.0	0.0	0.0
16 hours	Pro	2.5	56.0	26.3	3.2	1.2	8.7	0.5	1.6	0.0	0.0
	Ocp	1.1	1.5	2.0	4.8	9.0	1.6	1.2	9.4	0.0	0.0

**Legend: Pro.** Proportion of vehicles in % (Sum may not add up to 100% due to figure rounding)\*

**Ocp.** Average occupancy of vehicles including both driver and passengers\*

**M&H** Medium and Heavy

\* All traffic data are collected from combined bounds